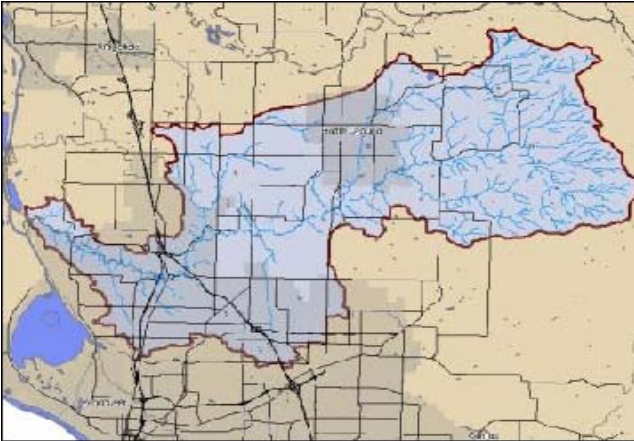


Salmon Creek Water Quality Improvement Project



The Department of Ecology updated the Salmon Creek water quality web page. The page focuses on fecal coliform, turbidity, water temperature and critical water quality characteristics. The page discusses each issue, including their importance, what is being done and the current status. Perhaps most rewarding, the web page below identifies 26 completed technical papers, with links to each. <http://www.ecy.wa.gov/programs/wq/tmdl/SalmonCr/SalmonCr.html>

The Clark County Monitoring Resource Center (MRC)

MRC, a service of the County Clean Water Program, provides loans of professional-grade water quality, biological, and habitat monitoring equipment. Use of the MRC is open to the general public, including teachers, volunteer and local governmental agencies. Clark County also maintains a library of volunteer monitoring materials and provides assistance with project development, technical questions, and data interpretation. If you do not have your own project in mind, you may wish to join one of our volunteer teams. For information on the MRC and to check for future volunteer opportunities, please visit the volunteer program website: <http://www.clark.wa.gov/water-resources/monitoring/volunteer.html>

WDFW Installed Fish Weir for Second Season

The Salmon Creek Resistance Board Weir is up and began collecting salmon on October 16th. The first fish have been caught, tagged, and released. Biologists track fish movement and identify spawning areas. Volunteers are needed to help find tags along the stream. Please contact David Page: david.page@salmoncreekwatershed.org



The State Shoreline Regulations Changing

Clark County hosted two meetings in October, in Battle Ground and Vancouver. The State shared their process and citizens identified key areas of interest. Results should be made public soon. Please contact the County for more information.

Water Typing Assessment

The Salmon Creek Watershed Council received grant monies (\$10,700) through the Washington Dept. of Fish and Wildlife's ALEA (Aquatic Lands Enhancement Account) volunteer stewardship grant program to support a Water Typing Reconnaissance project in the Salmon Creek Watershed. This project identifies fish bearing creeks that may not be mapped by the state. Please contact Randall Pearl: randall.pearl@salmoncreekwatershed.org

Dave Brown's Wild Fish Recovery Efforts

The Salmon Creek Watershed Council supports Dave Brown's Wild Fish Recovery project in the Salmon Creek Watershed by providing funds to construct rearing pens. Board members Mike Kerbs, Ben Dennis, and David Page assisted in the construction of a rearing pen on Baker Creek in the Hockinson area. Success of this project, and more like it, will lead, in part, to fulfilling Salmon Creek Watershed Council's mission by increasing salmonid production. For more information, please contact Mike Kerbs:

mike.kerbs@salmoncreekwatershed.org



1,000 fingerling salmonids will be reared over the winter to improve their chance of survival, and then released. The salmon and some of the trout will emigrate to the ocean and return as adults in a few years to spawn in Salmon Creek.

Salmon Creek Cleanup

The Salmon Creek Watershed Council in partnership with the County is leading an effort to clean-up dump sites along Salmon Creek and its tributaries. Clark County's Clean Water program identified several dozen potential sites through public reporting and asked the Council to assist. Field checking of each site is preceding prioritization of sites and actual cleanup. We encourage interested volunteers to contact Steve Fountain:

steve.fountain@salmoncreekwatershedcouncil.org

Council Recruiting for Board Members and More

We are looking for Board members and volunteers. Monthly Board meetings are held on the second Thursday of each month, 5:30 p.m., in the Clark Utility District's education center on NE 117th Avenue. This is in the large complex just north of Padden Parkway, on the west side of 117th Avenue.

Current Board Members are Mike Kerbs, Bianca Streif, David Page, Tim Tolle, Randall Pearl, Steve Fountain, and Ben Dennis

Volunteer opportunities in habitat restoration, stream monitoring, stream survey, cleanup, community outreach and fund raising are sought. Opportunities are posted on our website or contact Jeff Wittler:

jeff.wittler@salmoncreekwatershed.org

Become a...



Join us on the internet

Our website: www.salmoncreekwatershed.org

We are also on **Facebook**. Join us and become a fan! Post your Salmon Creek photos.

We can also be found on YouTube at:

<http://www.youtube.com/users/salmoncreekWA>

Fishing Closed

The area 200 feet above and below the fish trap on Salmon Creek is closed to fishing until March 15, 2010. This closure allows WDFW and volunteers to operate the trap and keep anglers a safe distance from it. For more information contact: Julie Grobelny (WDFW) 360-906-6716.

For more information:

Please visit our website or contact Tim Tolle, Outreach Chair 360-573-2291 or E-mail:

tim.tolle@salmoncreekwatershed.org

